



REMODELING & CONSTRUCTION PARTNER FOR SAN FRANCISCO HOMES

Executing residential projects with precision, professionalism, and licensed general contractor oversight.





Mission Home Remodeling

is a residential and commercial remodeling and construction company based in San Francisco and a licensed general contractor serving the Bay Area.

We specialize in executing architect- and designer-led residential projects-delivering high-quality construction, clear coordination, and reliable on-site leadership from start to finish.

Our role is simple:

You design. We build.

WHAT PARTNERS NEED FROM A BUILDER

Successful residential and commercial projects rely on dependable execution. Our partners count on us for:

- ✓ Accurate construction from approved plans
- ✓ Respect for design intent and documentation
- ✓ Clear communication throughout the build
- ✓ Permit and inspection coordination
- ✓ Reliable scheduling and site supervision

We focus on execution—so your work is built exactly as intended.



HOW WE SUPPORT ARCHITECTS & DESIGNERS



We collaborate with architects and designers as a construction-first partner.

You maintain creative and technical ownership of the design. We manage construction logistics, sequencing, and execution—ensuring plans are translated cleanly from drawings to finished space.

Our approach avoids overlap and supports smooth collaboration.

CONSTRUCTION- FIRST EXPERTISE

Our experience spans complex residential and commercial construction, including:



**Full Home
Remodels**



**Structural
Modifications**



**Additions and
Expansions**



**ADUs and
conversions**



**Ground-Up
Residential Builds**

We understand how to work within existing homes, tight sites, and occupied properties — planning carefully to minimize disruption and risk.



LICENSED GENERAL CONTRACTOR OVERSIGHT



As a licensed general contractor, we manage all core construction responsibilities, including:

- 1** Permit Processing and Approvals
- 2** Trade Supervision and Sequencing
- 3** Code Compliance and Site Safety
- 4** Inspection Scheduling and Coordination
- 5** Quality Control Throughout Construction

Our partners value having a contractor who understands both field execution and regulatory requirements.

FULL HOME REMODEL CONSTRUCTION

We execute full home remodels that require close coordination across multiple trades and phases.



From structural changes to final finishes, we manage construction with attention to sequencing, documentation, and detail—ensuring the final build reflects the approved design and performs as expected.

HOME ADDITIONS & EXPANSIONS

We construct home additions that integrate seamlessly with existing structures.

Our scope includes foundation work, framing, roofing tie-ins, and system extensions—executed with attention to structural integrity, weatherproofing, and long-term performance.





GARAGE & BASEMENT ADU CONVERSION

ADU projects require strong familiarity with local codes and inspection processes.

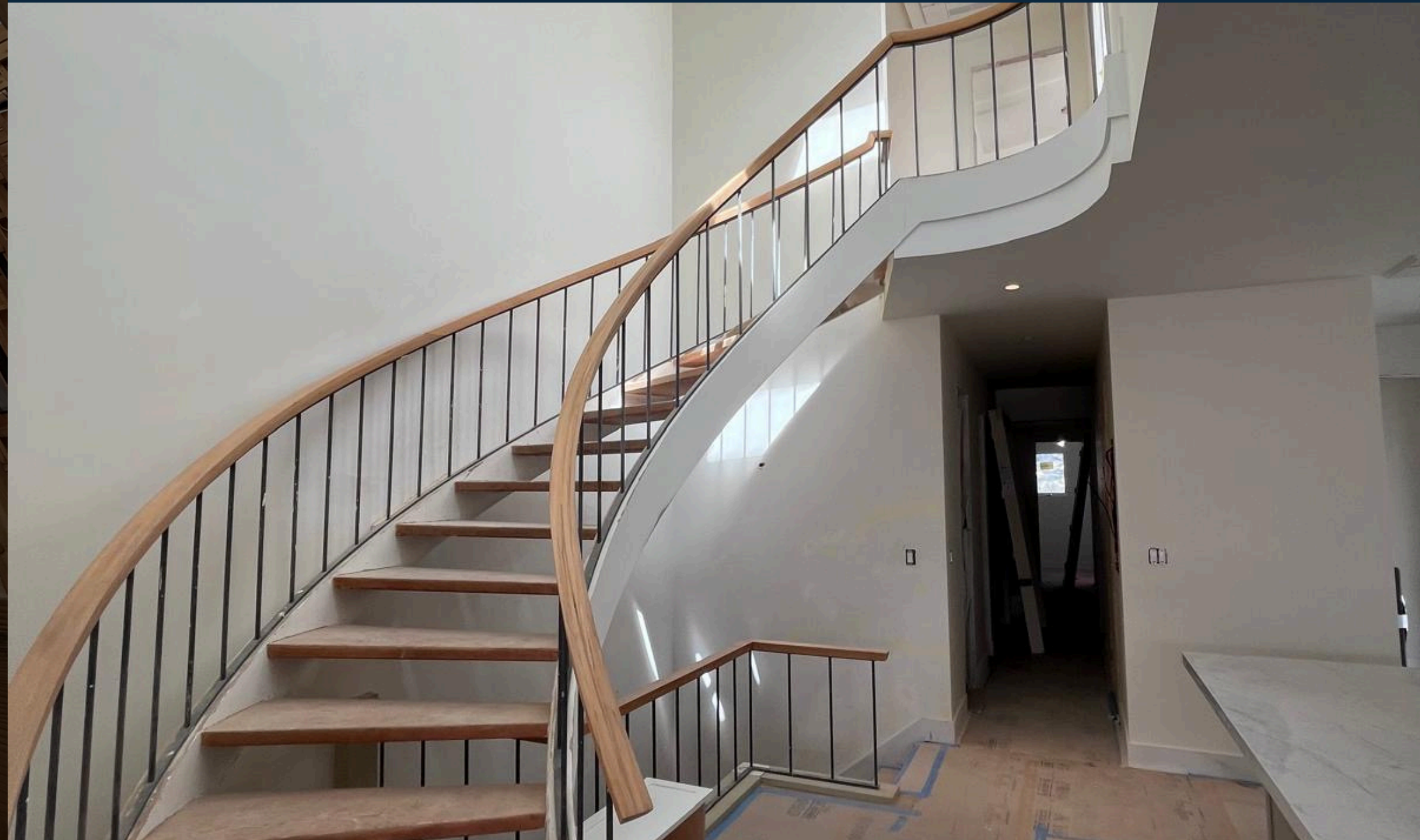
We execute garage and basement conversions with a focus on structural compliance, life-safety requirements, and durable construction — helping partners deliver high-quality, code-compliant living spaces.



NEW CONSTRUCTION EXECUTION

For ground-up residential and commercial projects, we provide full construction management — from site preparation through final inspection.

We coordinate closely with architects, engineers, and inspectors to ensure accurate execution, safe practices, and smooth project delivery.



Quality control throughout construction

Our construction capabilities include:



**Foundation
repair and
reinforcement**

**Structural
framing and
modifications**

**Electrical
rewires**

Replumbing

**Load-bearing
adjustments**

These services reinforce our role as a true construction partner, capable of handling complex residential scopes.

PRE-CONSTRUCTION COORDINATION

Before construction begins, we support projects through:

1

Constructability review

2

Trade coordination planning

3

Schedule alignment

4

Permit preparation

Early coordination helps reduce issues during construction and supports smoother execution.



OUR CONSTRUCTION PROCESS

Our construction process is built around clarity and accountability:

**Constructability
review**

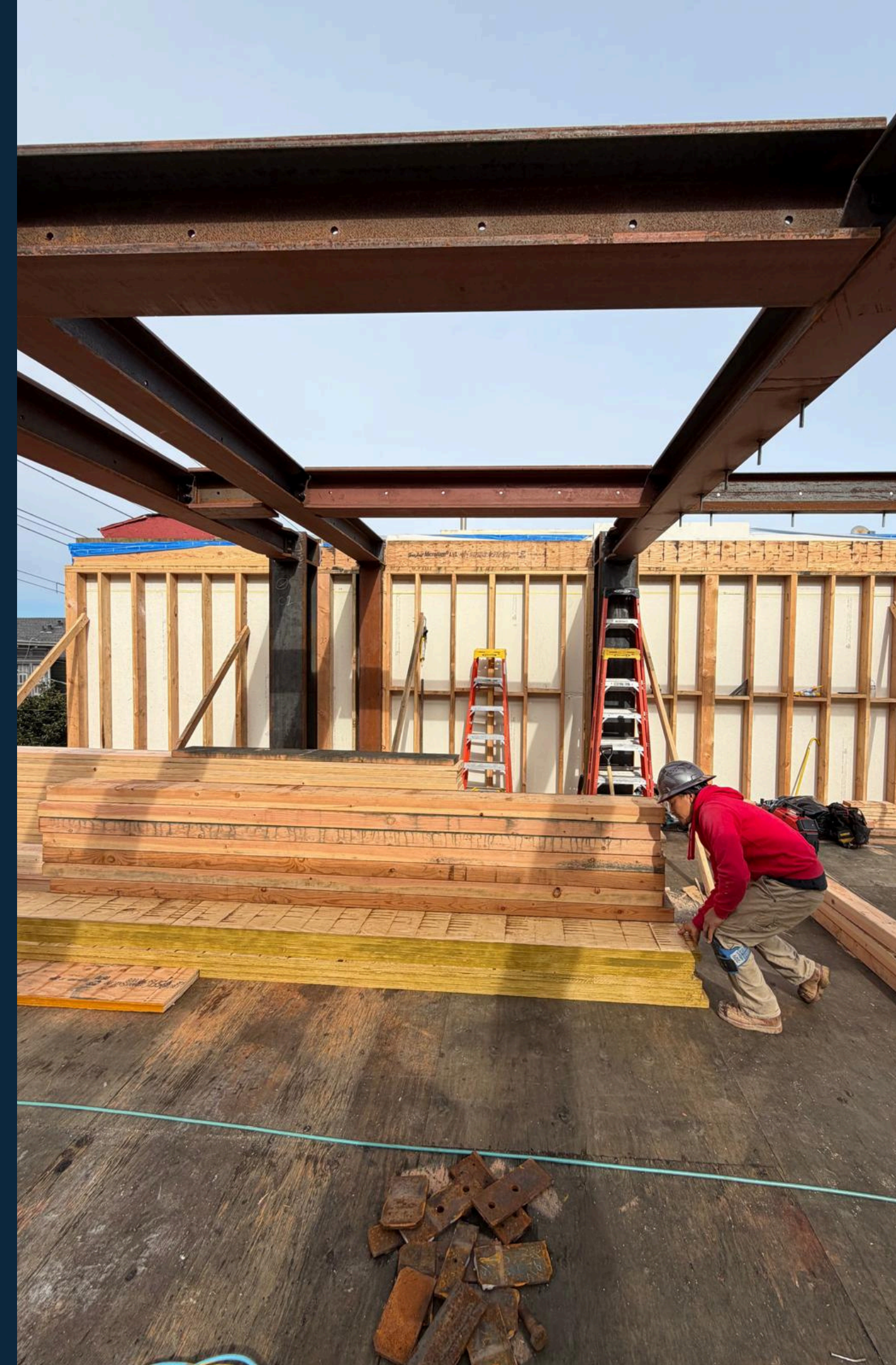
**Permit and inspection
coordination**

**Trade
scheduling**

**Active site
supervision**

**Quality control
and completion**

Each phase is managed with professionalism and transparency.



COMMUNICATION DURING CONSTRUCTION

Clear communication is essential during active construction.

We maintain regular updates, address field conditions promptly, and coordinate closely with all stakeholders to keep projects moving efficiently and responsibly.



TECHNOLOGY AS A SUPPORT TOOL

Visualization tools, including AI-generated 3D previews, are used as communication aids to help homeowners understand scope and decisions during construction.



These tools support collaboration but do not replace architectural or design services.

BUILT FOR SAN FRANCISCO HOMES

We bring hands-on experience building in San Francisco and the Bay Area — where older housing stock, tight sites, and strict codes are common.

Our local knowledge helps anticipate challenges and keep projects on track.



WHO WE WORK WITH

We partner with:

- **Architects**
- **Interior designers**
- **Engineers**
- **Realtors and real estate professionals**
- **Investors and industry partners**

Our partnerships are built on mutual respect and clear role definition.




If you're looking for a remodeling and construction partner who executes work responsibly and professionally, we'd welcome the opportunity to collaborate.



Mission Home Remodeling

San Francisco & Bay Area
Licensed General Contractor
#1078954

Contact us for further discussion :

 (415) 306-8549

 contact@missionhomeremodeling.com

 www.missionhomeremodeling.com